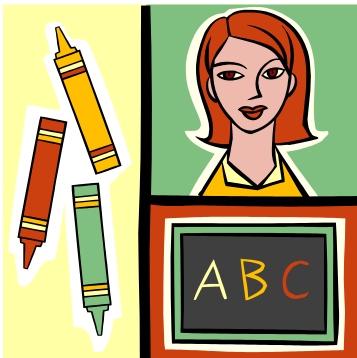


# INTERVENTION AND REFERRAL SERVICES (I&RS) TRAINING AND TECHNICAL ASSISTANCE SERVICES



The SRI & ETTC offers schools and districts the resources to support building and district staff in the effective implementation of I&RS best practices. The SRI & ETTC provides public professional development workshops and custom onsite services which are designed to provide schools and districts with the information and skills to effectively implement the I&RS program. Participants will learn how to identify student issues and plan effective interventions and action plans to address these issues.

According to N.J.A.C. 6A:16-8, each district board of education is required to establish and implement a coordinated system in each school building in which general education students are served for the planning and delivery of Intervention and Referral Services (I&RS.) I&RS is designed to assist students who are experiencing learning, behavior or health difficulties and assist staff who have difficulties in addressing students' learning, behavior or health needs.

The SRI&ETTC provided I&RS training across the state for 4 years through the I&RS Technical Assistance Project with the New Jersey Department of Education and our trainers have extensive experience in the delivery of this program.

**The SRI & ETTC is currently offering Public and Custom I&RS Workshops to fit the needs of school districts.**

## **INTERVENTION AND REFERRAL SERVICES (I&RS) ONE DAY TEAM TRAINING**

Intervention and Referral Services (I&RS) One Day Team Training is designed to provide schools which have new or reorganized (e.g. new members, new structure) school building I&RS teams with basic information, materials and skills to help them fulfill the regulatory requirements for the planning, development, implementation and maintenance of programs of I&RS (N.J.A.C. 6A:16-8). This training can also be used to provide review for existing teams. Workshop focus will include identifying and addressing academic, behavior and health issues and developing effective intervention strategies and action plans.

### **Fall 2017 Training Dates:**

**October 11, 2017 - 9 a.m. to 3 p.m.**

**December 13, 2017 - 9 a.m. to 3 p.m.**

**Cost: \$178 or 7 ETTC hours**

## **PLANNING AND IMPLEMENTING A SUCCESSFUL I&RS PROGRAM FOR SCHOOL ADMINISTRATORS**

This training program is specifically designed to provide administrators of schools which have new or reorganized (e.g., new members, new structure) school building I&RS teams with basic information, materials and skills to help them support the effective implementation of N.J.A.C. 6A:16-8.

**Fall 2017 Training Date: November 14, 2017 - 9 a.m. to 1 p.m.**

**Cost: \$130 or 5 ETTC hours**

## **ONSITE TEAM TRAINING AND TECHNICAL ASSISTANCE**

Onsite Training is designed to provide schools and districts with information and training to ensure a highly functioning I&RS team. Onsite Team Training addresses information, materials and skills to help fulfill the regulatory requirements for the planning, development, implementation and maintenance of I&RS programs, including identifying and addressing academic, behavior and health issues and developing effective intervention strategies and action plans. Onsite Technical Assistance activities may include observation of an actual I&RS meeting to assess strengths and opportunities for improvement. Feedback will be provided regarding meeting organization, timing and effectiveness of application of the problem-solving model.

Pricing for I&RS Onsite Training is based on the number of hours in-district and can range from a three hour workshop to a full day workshop. Trainers are available to come into your district and tailor the I&RS workshop to fit the needs of your individual school or district. Larger group sizes can be accommodated.

**For complete workshop descriptions and more information on I&RS Training Services visit [www.etc.net/intervention](http://www.etc.net/intervention) or please contact Courtney Regan at (609) 626-3866 ([courtney.regan@stockton.edu](mailto:courtney.regan@stockton.edu))**